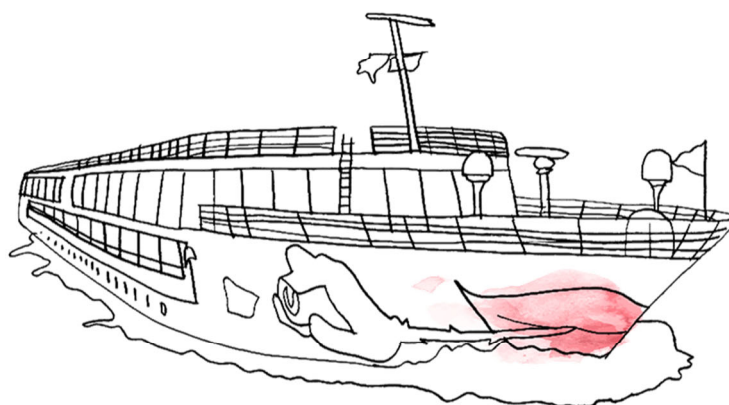


SAIL AWAY MAIN & MAIN-DANUBE-CANAL

CRUISES FROM/TO NUREMBERG

Everything you should know before you go



aROSA 
Cruising differently

Thank you for choosing to travel with A-ROSA!

To ensure you enjoy your cruise on the Main and Main-Danube-Canal to the fullest, we would like to give you some information regarding your arrival and time on board. If you keep the following in mind, your holiday will be smooth sailing from start to finish.

If you have any further questions, our A-ROSA Service Center will be more than happy to help. You can reach us Monday through Saturday from 9:00 to 18:00 (CET/CEST) at +49 381 202 6001.

Your A-ROSA team wishes you a wonderful cruise!

CONTENT

ARRIVAL BY CAR	3
ARRIVAL BY TRAIN	3
EMBARKATION AND DISEMBARKATION	4
IMPORTANT ADDRESSES AND PHONE NUMBERS	5



ARRIVAL BY CAR

A-ROSA does not have a contractual parking partner in Nuremberg. Please make your own arrangements for parking.



ARRIVAL BY TRAIN

As taxi availability in Nuremberg is limited, especially at weekends, we recommend booking our **A-ROSA transfer services between the train station and the ship** in advance.

BOOKING

Price: € 33 per person (return transfer)

Book online at www.arosa-cruises.com/transferpackages or conveniently via the **A-ROSA App**

ON THE DAY OF EMBARKATION

Transfer time: 15:00 (please note that waiting times may occur)

Meeting point: Nuremberg Central Station, south exit (towards the street 'Hinterm Bahnhof').

On site, the transfer bus marked with an A-ROSA sign will be ready for you.

You will hand over your luggage at the bus, and it will be waiting for you on board later.

If you have any questions on the day of embarkation, your A-ROSA ship will be happy to help. You will find your ship's phone number on the first page of your personal travel information.

DAY OF DISEMBARKATION

On the morning of disembarkation, we will take you back to the train station. We will inform you of the exact times on board. **Please plan your departure from Nuremberg no earlier than 9:30.**

IMPORTANT FOR TRAVELLERS WITH DEUTSCHE BAHN TICKETS (GERMAN RAILWAY)

If your train is delayed or cancelled, please send:

- the completed **DB passenger rights forms**
- all **original receipts/tickets**

to:

A-ROSA Flussschiff GmbH

Loggerweg 5

18055 Rostock

Germany

(please do not send these directly to Deutsche Bahn, as we will be unable to process your claim)



EMBARKATION AND DISEMBARKATION

BERTH

A-ROSA CLEA will be berthed in Nuremberg at the following address for embarkation and/or disembarkation:

Personenschiffahrtshafen Nuremberg · Berth 4 · Europakai 10 · 90451 Nuremberg · Germany

<https://maps.app.goo.gl/7mLDge5mqbwwnQJ68>



Note: Berths are subject to change at short notice. If possible, we will inform you in advance. In the event of a last-minute change, further information will be available at the originally planned berth, either from our employees or on an information board.

CHECK-IN

- **From 15:00 (suite guests from 12:00):** Luggage service, check-in & access to the cabins
- **Boarding begins earliest at 15:00**
→ Please wait outside the ship until boarding begins.
- **Please have valid identity documents ready for check-in**

Important information:

In some ports of call, additional **city taxes** will be charged to the **onboard account**. For details, please refer to www.rosa-cruises.com/company/current-travel-information.

It is mandatory to provide some personal information in the **ship's manifest**.

Please enter your data online at least **3 weeks before departure** here: www.rosa-cruises.com/manifest

CHECK-OUT

When planning your departure, please note that you must disembark the ship **by 9:00**. You will receive detailed departure information on board in good time.

IMPORTANT ADDRESSES

BERTH

Personenschiffahrtshafen Nuremberg
Berth 4
Europakai 10
90451 Nuremberg
Germany

NUREMBERG CENTRAL STATION

Bahnhofspl. 9
90443 Nuremberg
Germany

EMERGENCY NUMBERS

The **A-ROSA Service Center** is available Monday to Saturday between 9:00 and 18:00 (CET/CEST) at the following number: **+49 381-202 6001**.

For any urgent matters, please contact **A-ROSA CLEA** directly: **+49 152 015 062 11**

Subject to change. Date of publication: April 2026